

MONTHLY MEMBERSHIP PROGRESS REPORT

District 321C2

Results as of: 5/31/2020

GMT:

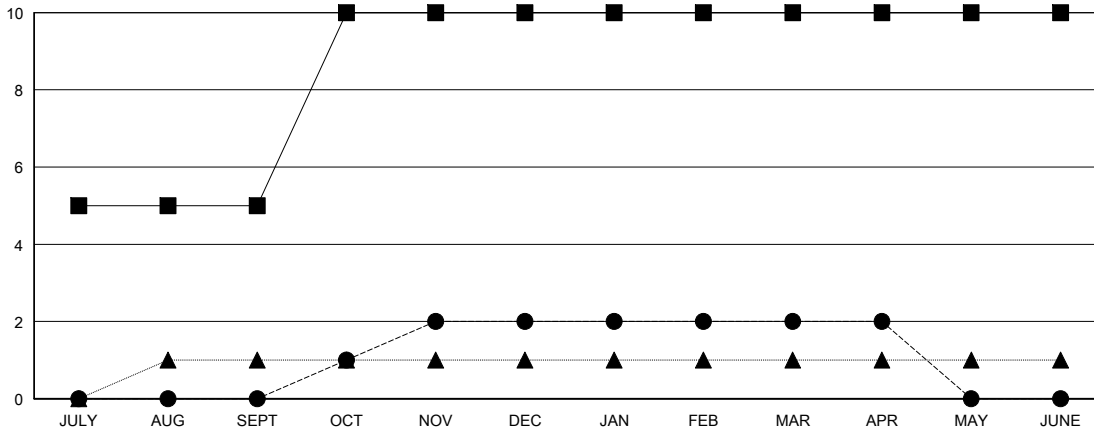
LOCATION INDIA

GMT CA

Clubs			
RESULTS FOR 2019-2020			
QUARTER	NEW CLUB GOAL	NEW CLUBS	DROPPED CLUBS
JULY/AUG/SEPT	5	0	1
OCT/NOV/DEC	5	2	1
JAN/FEB/MAR	0	0	0
APR/MAY/JUNE	0	0	0

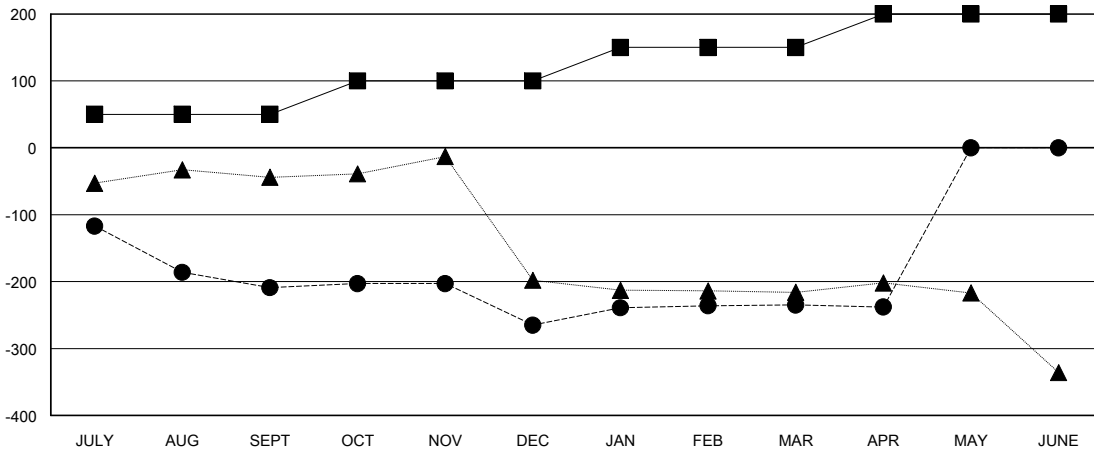
Members			
RESULTS FOR 2019-2020			
QUARTER	MEMBER GROWTH NET GOAL	MEMBER GROWTH ACTUAL	DROPPED MEMBERS ACTUAL (including transfers)
JULY/AUG/SEPT	50	53	243
OCT/NOV/DEC	50	54	105
JAN/FEB/MAR	50	80	39
APR/MAY/JUNE	50	0	3

GOALS AND ACTUAL NEW CLUBS CUMULATIVE



- - CURRENT YEAR GOALS FOR NEW CLUBS
- - CURRENT YEAR ACTUAL NEW CLUBS
- ▲ - LAST YEAR ACTUAL NEW CLUBS

GOALS AND ACTUAL MEMBERS CUMULATIVE



- - MEMBER GROWTH NET GOAL
- - MEMBER GROWTH ACTUAL
- ▲ - LAST YEAR MEMBERSHIP ACTUAL

DROPPED CLUBS: 2	28 CLUBS OF 80 ADDED 1 OR MORE NEW MEMBERS	GENDER DISTRIBUTION MALE 2,103 (64.75%) FEMALE 1,145 (35.25%)
DROPPED MEMBERS DECEASED 6 CLUB CANCELLED 72 OTHER 312 TOTAL 390	CLICK HERE FOR CUMULATIVE MEMBERSHIP DATA	TOTAL FAMILY UNIT MEMBERS 2,062 FAMILY MEMBERS PAYING HALF DUES 1,291